

INDUSTRIAL BOARD



It is a stone wool board that is used for thermal insulation and fire safety of industrial plants, process equipments, steel construction buildings.

Application

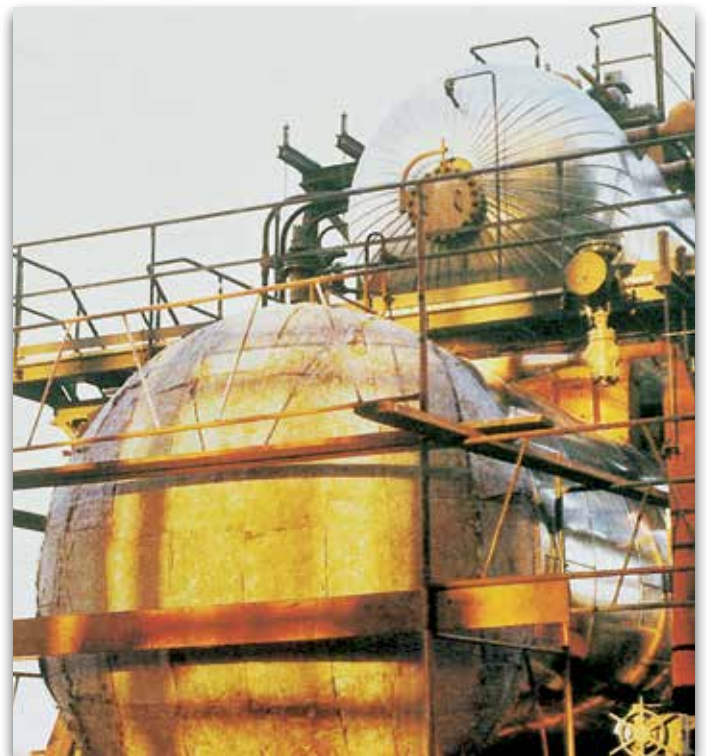
Noncombustibility of Stone Wool Industrial Boards enables them to be used for thermal, sound and fire insulation of high temperatures. The boards are fastened to the smooth application surfaces by fastening rods. Then they are either covered with sheet metal cladding or they are laid in the structural frame formed on the surface. The boards can be used in prefabricated panel applications as well.

There are two different types of industrial boards available as SL1 and SL2 with different technical properties.

SL 1	Thickness (cm)	Width x Length (cm)	Package (m ²)
	2,5	60 x 120	11,52
	4	60 x 120	7,20
	5	60 x 120	5,76
	6	60 x 120	5,04
	8	60 x 120	3,60
	10	60 x 120	2,88
	12	60 x 120	2,88

SL 2	Thickness (cm)	Width x Length (cm)	Package (m ²)
	2,5	60 x 120	7,20
	4	60 x 120	4,32
	5	60 x 120	3,60
	6	60 x 120	2,88
	8	60 x 120	2,16
	10	60 x 120	2,16
	12	60 x 120	1,44

Type		SL 1	SL 2
Density (kg/m ³)		70	110
Declared Thermal Conductivity (W/mk)	Average Temperature (°C)	50	0,039
		100	0,048
		150	0,059
		200	0,072
		250	0,087
		300	0,103
		350	0,122



- High thermal insulation
- Fire safety
- Sound insulation
- Easy to apply



TECHNICAL DATA SHEET

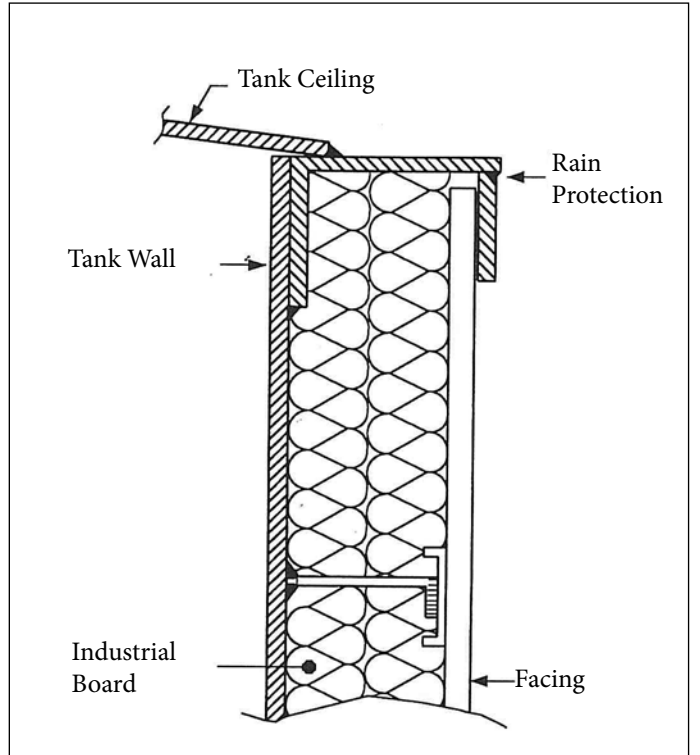
izocam Industrial Board

Properties	Symbol	Unit	Description								Tolerance	Standard
Material	-	-	Stone Wool								-	TS EN 14303
Material Type	-	-	SL1				SL2				-	-
Density	ρ	kg/m ³	70				110				+/-10%	-
Width	w	mm	600								+/-1,5%	TS EN 822
Length	l	mm	1200								+/-2%	TS EN 822
Thickness	t	mm	25	40	50	60	80	100	120	T4 *	TS EN 823	
Facing	-	-	Unfaced								-	-
Reaction to fire	-	-	A1								-	TS EN 13501-1
Declared Thermal Conductivity	T	°C	50	100	150	200	250	300	350	-	TS EN 12667/12939 13787	
	SL1	λ_D	W/m.K	0,039	0,048	0,059	0,072	0,087	0,103			0,122
	SL2			0,037	0,045	0,053	0,062	0,073	0,085			0,097
Squareness	S_b	mm/m	max. 5								-	TS EN 824
Water Vapor Diffusion Resistance Coefficient	μ	-	1								-	TS EN 12086
Packaging Material	-	-	PE Film								-	-
Other Information	Yellow/black glass tissue and alu-foil faced types are also available.											

* T4: -3% or -3 mm; +5% or +5 mm. the biggest value is chosen at minus tolerance, the smallest value is chosen at plus tolerance.

Safety Reminders for Loading, Unloading, Shipping and Storing

- These operations should be done indoors in case of rainy weather conditions.
- Loading and unloading should be done by (at least) two people.
- Products should be put on top of each other with extra care.
- Only backshutter of the truck body should be opened during unloading.
- Unloading should be carried out from backside to the front.
- Products should be wrapped by a waterproof cover even if the shipping distance is short.
- Products should not be put into upright position during shipping and storing.
- Storing should be carried out by using pallets. But they should not superposed with pallets.
- Products should not be pulled by their package.
- Products should not be stepped on and should not be used as steps.
- The packages should be put on the floor with extra care so the corners of the product especially is not damaged by a hit.



Izocam is not responsible for any problem because of misprinting. Izocam, the manufacturer, reserves the right to alter product specifications without prior notice. Izocam also manufactures special products upon request. For your requirements, you are requested to contact our Export Department.